

# Depend on it !

## DHC Series Tankless Electric Water Heaters

- Unlimited Supply of Hot Water
- Sleek Design Saves Space
- Proven Reliability
- Major Energy Savings



Exclusive copper-clad  
heating element

**STIEBEL ELTRON**

*Simply the Best*

**800-582-8423**

E-mail: [info@stiebel-eltron-usa.com](mailto:info@stiebel-eltron-usa.com)  
[www.stiebel-eltron-usa.com](http://www.stiebel-eltron-usa.com)

  
C ETL US  
For U.S. and Canada

**ISO 9001**  
CERTIFIED

# Ideal for all point-of-use water heating applications !

**STIEBEL ELTRON DHC** tankless electric water heaters are the ideal choice for all point-of-use applications in the following settings:

## Commercial • Industrial • Institutional

- Office Buildings
- Stores
- Malls
- Warehouses
- Restaurants
- Gas Stations
- Schools
- Hotels/Motels
- Commercial Condominiums
- Manufacturing Facilities

## Residential

- Bathroom Sinks
- Kitchen Sinks
- Laundry Areas
- Cabins/Cottages
- Low Flow Showers

The STIEBEL ELTRON DHC tankless water heaters are designed for installation at the point-of-use. The DHC heats water instantaneously as it flows through the unit. Stand-by heat-losses are completely eliminated. The heating elements are controlled by a flow switch. An exclusive scald-guard thermostat keeps the water temperature within safe limits at all times. Additionally, the DHC water heaters are equipped with a safety high-limit with manual reset. The rugged all copper design ensures many years of reliable service.

The models DHC 3-1, DHC 3-2 and DHC 4-2 are shipped with 0.5 GPM pressure compensating flow reducer/aerators that fit on most faucets. Flow controls and faucet aerators are highly recommended in conjunction with tankless water heaters. No pressure relief valve\*, drains, or circulating pumps needed.

\*Except in Massachusetts



Scald-guard thermostat

Heater

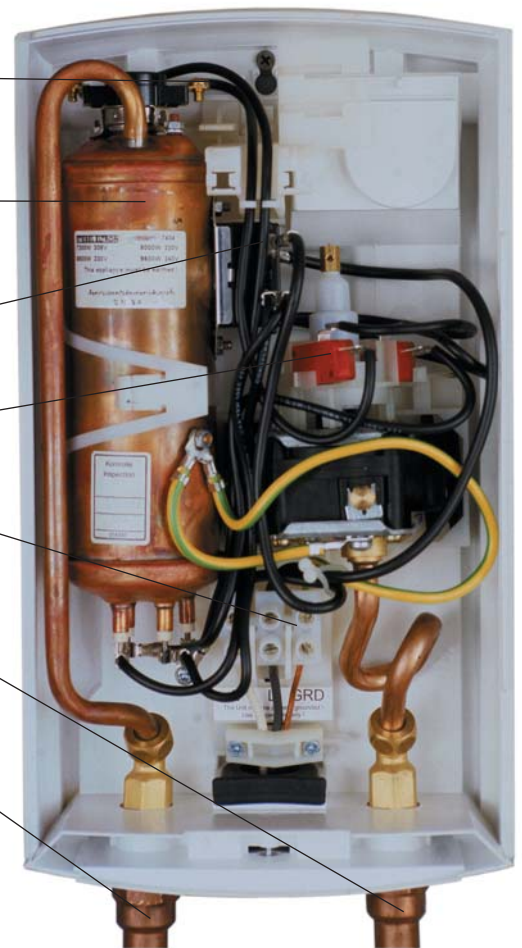
Safety thermal cut-out

Flow switch

Wiring block

Cold water connection

Hot water connection

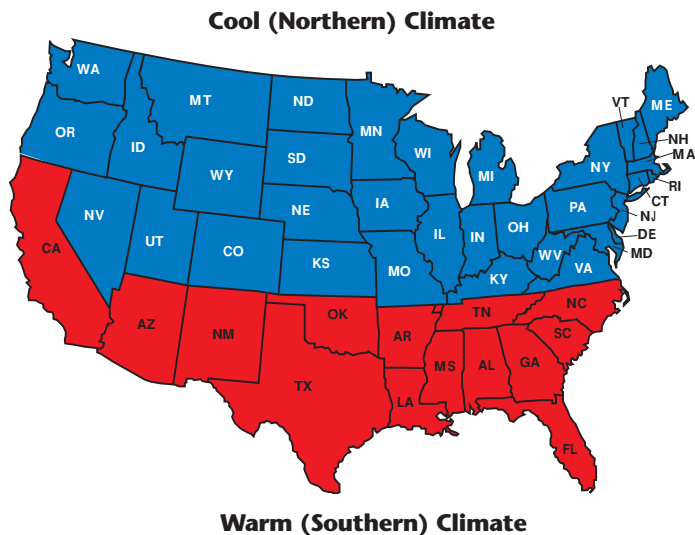


**Engineer's Specifications:** The tankless electric water heater shall be equipped with a copper sheathed heating element housed in a copper cylinder. The flow switch that operates the heating element shall be of the mechanical pressure differential type. The unit shall be equipped with a safety high-limit switch with manual reset. In addition, the unit shall be equipped with a separate self-resetting thermostat designed to keep the water temperature at the tap below 130°F. An integral tamper-proof flow adjustment screw shall be provided for the installer so that water flow rates can easily be adjusted. The water connections shall be designed for 1/2" NPT female adapter. The housing shall be made of high impact polycarbonate plastic.



## Tankless Electric Water Heater Sizing Chart

	Flow	GPM	DHC 3-1	DHC 3-2	DHC 4-2	DHC 4-3	DHC 5-2	DHC 6-2	DHC 8-2	DHC 10-2
<b>Lav. Sink</b>	Low	0.50								
	Low	0.50								
	Low-Med	0.75								
	Low-Med	0.75								
	Med	1.00								
	Med	1.00								
	High	1.50								
	High	1.50								
<b>Kitchen Sink</b>	Low	1.00								
	Low	1.00								
	Med	1.50								
	Med	1.50								
<b>Utility Sink</b>	1.50 - 2.00									
	1.50 - 2.00									



### DHC Depend On It !

Featuring an exclusive copper clad heating element that provides superior reliability.



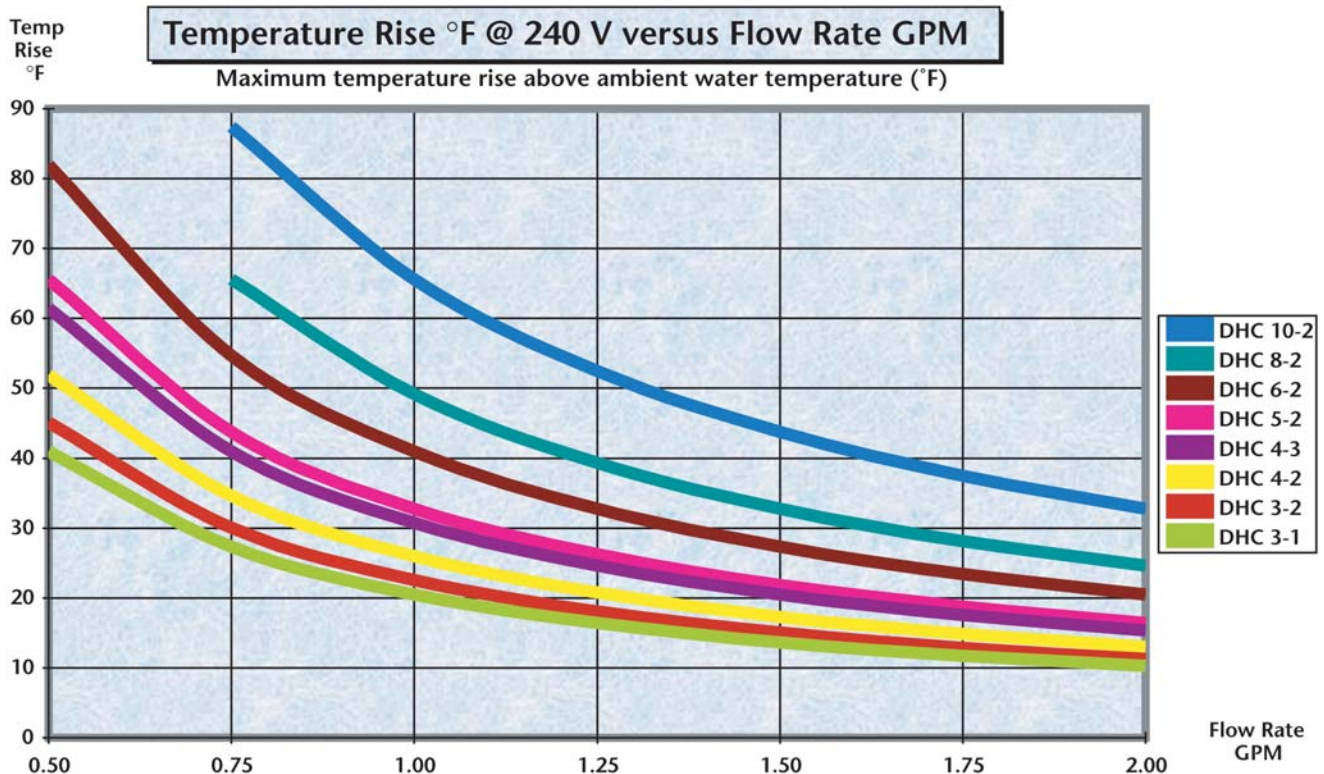
## DHC Technical Data

Model	DHC 3-1		DHC 3-2		DHC 4-2		DHC 4-3		DHC 5-2		DHC 6-2		DHC 8-2		DHC 10-2		
Phase	1	1	1	1	1	1	1	1	1	1	1	1	1	1	1	1	
Voltage	V	120	208	240	208	240	277	208	240	208	240	208	240	208	240	208	240
Wattage	KW	3.0	2.5	3.3	2.9	3.8	4.5	3.6	4.8	4.5	6.0	5.4	7.2	7.2	9.6		
Amperage	A	25	12	14	14	16	17	18	20	22	25	26	30	35	40		
Min. required circuit breaker size	A	30	15	20	20	20	20	30	30	30	30	30	40	40	50		
Recommended wire size	AWG COPPER	10	14	12	12	12	12	10	10	10	10	10	8	8	8		
Min water flow to activate unit	GPM / Lmin	0.32 / 1.2	0.32 / 1.2	0.42 / 1.6	0.42 / 1.6	0.42 / 1.6	0.42 / 1.6	0.47 / 1.8	0.69 / 2.6	0.79 / 3.0							
Weight	lbs. / KG	4.6 / 2.1	5.3 / 2.4	5.3 / 2.4	5.3 / 2.4	4.6 / 2.1	4.6 / 2.1	6 / 2.1	5.3 / 2.4	5.3 / 2.4							
Dimensions (Height/Width/Depth)	in. / cm	14 3/16(36.0) / 7 7/8(20.0) / 4 1/8(10.4)															
Nominal water volume	Gal / L	0.13 / 0.51															
Working pressure	PSI / bar	150 / 10															
Tested to pressure	PSI / bar	300 / 20															
Water connections		1/2" NPT															

\* Suitable for supply with cold water

\* Tankless water heaters are considered a non-continuous load

\* Conductors should be sized to maintain a voltage drop of less than 3% under load



Limited Warranty (Excerpt): STIEBEL ELTRON, Inc. warrants to the original owner that the DHC Series Water Heater will be free from defects in workmanship and materials for a period of THREE YEARS from the date of purchase. Should any part(s) prove to be defective during this period, STIEBEL ELTRON, Inc. will be responsible for replacement of the defective part(s) only. STIEBEL ELTRON, Inc. is not responsible for labor charges.

Distributed by:

### STIEBEL ELTRON, Inc.

242 Suffolk Street, Holyoke, MA 01040

Phone: (413) 538-7850 • (800) 582-8423

Fax: (413) 538-8555

E-mail: [info@stiebel-eltron-usa.com](mailto:info@stiebel-eltron-usa.com)

Please visit our web site at [www.stiebel-eltron-usa.com](http://www.stiebel-eltron-usa.com)